

## ASSESSMENT OF RADON GAS AND RAINFALL MEASUREMENTS IN SAO JOSE DOS CAMPOS, SP, BRAZIL

INACIO MALMONGE MARTIN

Department of Physics, Technological Institute of Aeronautics ITA, São Jose dos Campos, São Paulo, Brazil

### ABSTRACT

The objective of this article was to explain the monitoring of intensity of the radon gas in the soil/air interface of earth. The physics laboratory and the ACA tower are both located at the Technological Institute of Aeronautics (ITA) have been chosen like monitoring site. During the period of 04/09/2018 to 02/01/2019 monitoring was made in the region of São José dos Campos, SP, Brazil. Radon gas is present on every land surface, accounting for approximately half of the ionizing radiation exposed to humans. To monitor the intensity of radon gas, the detector was used as Radon Eye RD200, where the intensity was obtained in the range of 0 to 2.0 pCi/l every hour. The results obtained from these experimental observations as well as discussions and suggestions are presented in this article.

**KEYWORDS:** Monitoring, Aeronautics & Radon gas.

### INTRODUCTION

Radon gas near the surface of the earth can be measured through its radioactive decay products (alpha particles and gamma photons). It is estimated that about 48% of the ambient ionizing radiation dose at the soil/air interface is from radon gas exhaling from earth.

Starting from the radioactive current of earth of the Uranium-238 ( $^{238}\text{U}$ ) disintegrates in the order of 1600 years for Radium-226 ( $^{226}\text{Ra}$ ) and arrives to Radon-222 ( $^{222}\text{Rn}$ ) in 3.82 days with emission of alpha particles of 5,49 MeV of energy. Radon is a noble gas, alpha emitter, produced in the natural decay series of uranium and thorium, which occur at varying concentrations in geological materials, especially rocks, soils and water. By diffusion and convection, radon migrates from rocks and soils into the atmosphere through cracks, holes and pipes, entering homes and other constructions.

Thus, an easy way to measure radon gas variation at any location is to monitor the presence of alpha particles of that energy in the desired region. This can be done with the Radon Eye RD200 portable ionization chamber.

As shown in the decay series, these radio nuclides come from the series originating from  $^{238}\text{U}$ ,  $^{235}\text{U}$  and  $^{232}\text{Th}$ , respectively. Although they are continuously produced in rocks and minerals by the decay  $\alpha$  of  $^{226}\text{Ra}$ ,  $^{224}\text{Ra}$  and  $^{223}\text{Ra}$ , since they are inert noble gases, these radio nuclides do not form chemical compounds and can be detected by their radioactive properties: well-defined energy and a sequence of short half-life decay products. In practice, only the isotopes radon ( $^{222}\text{Rn}$ ) and toronium ( $^{220}\text{Rn}$ ) are relevant from the point of view of radiological protection or environmental and geological interest.

Radon ( $^{222}\text{Rn}$ ) has a half-life of 3.82 days which allows significant mobility to escape from the rock in which it was generated. Radon occurs naturally in soils in the typical range of 4.0 to 40 kBq/m<sup>3</sup> and in the atmosphere, not very close to the earth, in the typical range of 4.0 to 50 Bqm<sup>-3</sup>. It is estimated that in Brazil, the average annual concentration of  $^{222}\text{Rn}$  in air varies from 0.6 to 30 Bq.m<sup>-3</sup> (IPEN, 2002 apud Fior, 2008).

According to the authors, for daytime variations, there are high levels of radon in the morning, at which point the atmospheric turbulence is accentuated, maximizing in the seasonal scale; high concentrations of radon tend to occur in the autumn and winter (Eisenbud and Gessel, 1998). However, the radon intensity at the soil-air interface varies with temperature, rainfall, winds and cold fronts from southern Brazil.

## MATERIAL AND METHOD

To monitor the variation of radon at the soil/atmosphere interface, the detector consisting of a Radon Eye RD200 portable ionization chamber was used. Manufactured in South Korea, the RD200 has sensitivity 20 times higher than other radon detectors and has the system in which it releases dual-structure pulses and a highly accurate detection circuit designed by FTLab's own technology. A first reliable one-hour data view is required, where its sensitivity is 1.35 counts per minute equivalent to 0.5 Becquerel/m<sup>3</sup>. The measurements were performed in the ACA tower at 25 meters from the ground and at the physics laboratory, both located at the Technological Institute of Aeronautics (ITA). Data acquisition is possible through the available Radon Eye application, only on smart phones. Power was supplied via a 12 VDC source connected to the detector, where the setting starts automatically. With an Iphone device, the data generated by the Radon Eye RD200 detector was transferred through the iTunes software and the Origin 1.5 software was used to graph the measurements of the radon intensity versus time on ITA campus. The rainfall variation in mm/min was measured by a scraper-type rain gauge and a data logger for data acquisition developed in the ITA, in accordance with international recommendations.



**Figure 1: ACA tower Room at 25 m Above Ground.**

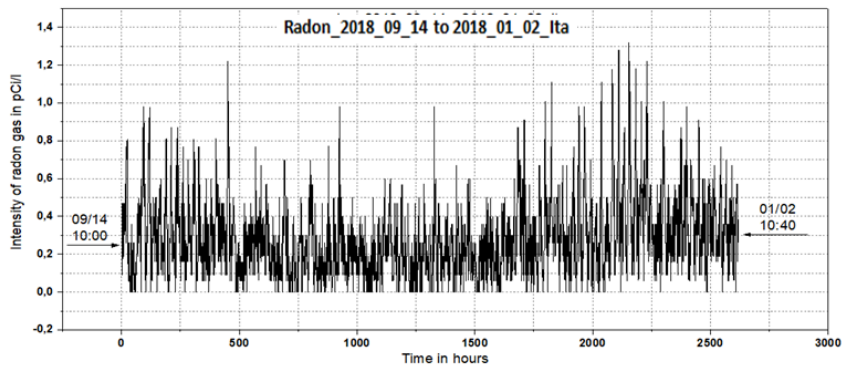


**Figure 2: Data collection of Radon Eye RD200 with an iPhone.**

**RESULTS AND DISCUSSIONS**

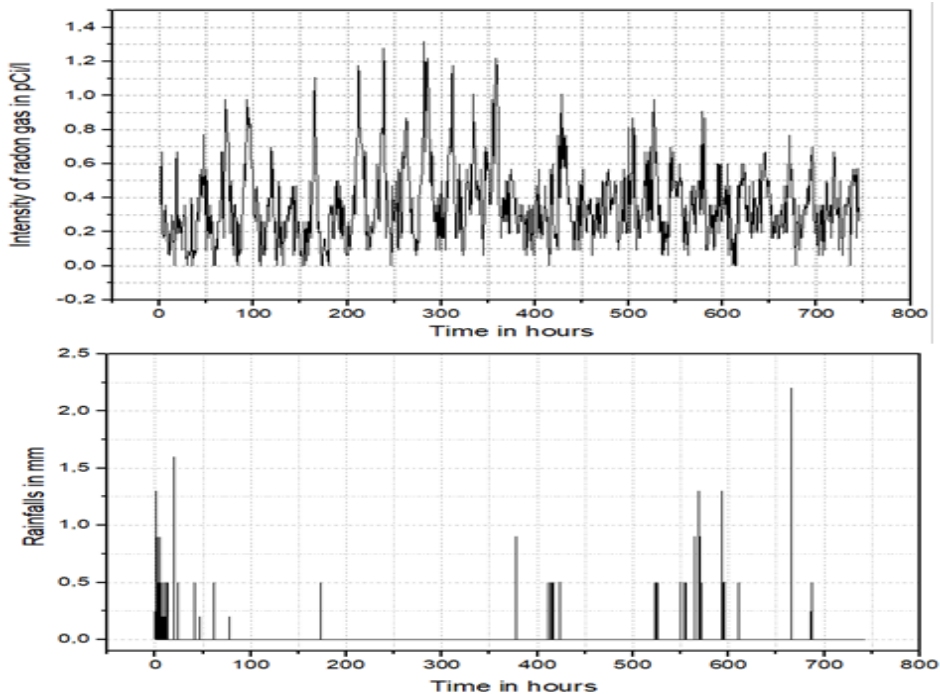
During the period from 09/09/2018 to 01/01/2019, the radon gas intensity was monitored at the soil/air interface in the campus of ITA in the region of São José dos Campos, Brazil.

Figure 3 shows the monitoring of radon gas as a function of time during the analysis period carried out in the ITA physics laboratory, in which it is possible to analyze the radon gas intensity variation on the ground level interface.



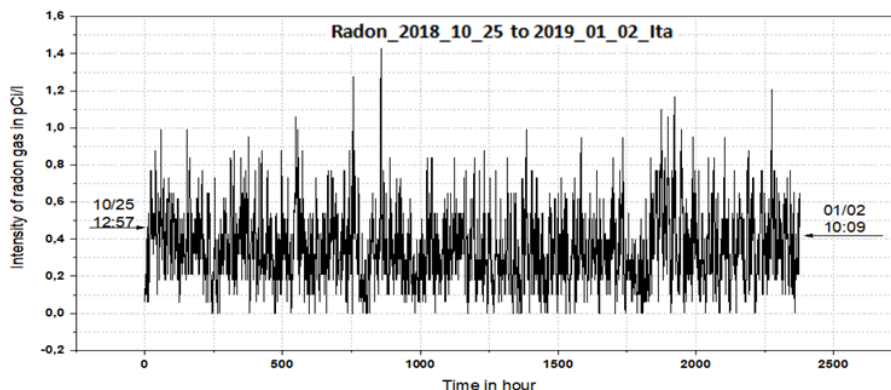
**Figure 3: Correlation of Radon Gas Intensity Versus Time in Hours from 09/14/2018 to 01/02/2019.**

In parallel with the monitoring of the intensity of radon gas in the surface, the intensity of rains occurred in the region during the whole month of December 2018, allowing the interaction between rainfall and the radiation exhalation by the radon gas during that period according to figure 4.



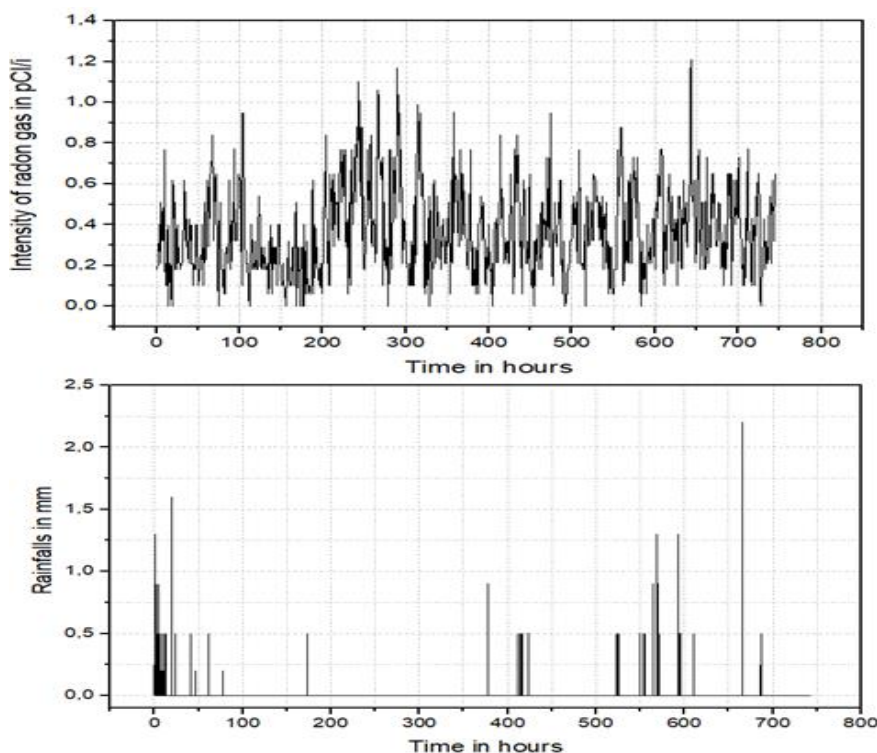
**Figure 4: Correlation of the Radon intensity in (pCi /l) each hour with the Amount of Rain in mm per hour in the Month of December 2018.**

The measurements carried out inside the ACA tower, located at 25 m height, are shown in fig. 5 with the radon gas intensity monitored during the period from 10/25/2018 to 02/01/2019.



**Figure.5: Measurements of Radon Gas Intensity in the Period from 10/25/2018 to 01/02/2019, carried out in the ACA Tower, Room 25 m above Ground Level.**

Then the same relation was made with the intensity of rains and the intensity of radon gas present in the region, but now using as reference, the data obtained through the measurements were made in the ACA tower. It is possible to analyze a correlation that is showed for the same period mentioned above in figure 6.



**Figure 6: Correlation of the Radon Intensity in (pCi/l) each hour with the Amount of Rainfall in December 2018.**

**CONCLUSIONS**

This paper presents the analysis of the radiation from the radon gas that exists on the surface of the earth in the region, having originated from the soil through the decay of the radioactive elements Uranium and Thorium. For this, measurements were used from a fully portable equipment alpha ionizing chamber, the Radon Eye RD200, which allows

to monitor the intensity of radon gas, where it can be connected to a smart phone in order to acquire and collect the data. It uses rain pluviometer sensor, of the tip type, to collect the data of rainfall in the region. Through this measurement system, it is possible to present the relationship between the intensity of radon gas and the intensity of rainfall in the region of the ITA campus in São José dos Campos, Brazil.

By analyzing figure 3, it can be stated that the intensity of radon gas on the earth's surface is higher during the times of drought. By means of the high temperature in which the soil is, the exhalation of the radon gas becomes greater. During the night-time, in the absence of the sun, the molecules of the radon gas in the atmosphere are no longer expanded, so they descend close to the ground, and during this event, the gas is in greater contact with the detector, where the radiation intensity is higher.

Figure 5 shows the same rainfall interaction, analyzing results obtained at 25 meters high, in the ACA tower room location. According to the monitoring carried out under these conditions, it is possible to identify some points at the exact moment, when the first rainfall occurred, a peak in the radiation spectrum from the radon is highlighted. This phenomenon is caused by air washing near the detector, where the molecules of radon gas is carried by rain concentrate in greater quantity at the height, next to the measurements.

## ACKNOWLEDGEMENTS

Thanks to CNPq (National Counsel of Technological and Scientific Development) and CAPES (Coordination for the Improvement of Higher Education Personnel) by the Fellowship Grant Support to the group's researchers and the ITA Division of Fundamental Sciences for supporting this research. Thanks also to INCT-FNA-ITA for supporting this research at ITA.

## REFERENCES

1. EPA - <https://www.epa.gov/radon/health-risk-radon> accessed in january 2019. et al. Radon-222 in Brazil: an outline of indoor and outdoor measurements. *J. Environ. Radioactiv.* (2003), 67(2) 131-143.
2. Da Silva, A. A. R. and Yoshimura, E. M. Radon and progeny in the city of São Paulo, Brazil, *Radiation Measurements* 40(2) 678–681, (2005) DOI 10.1016/j.radmeas.2005.06.034.
3. T. Tsukuda - Radon gas monitoring by gamma-ray measurements on the ground for detecting crustal activity changes – *Bull. Eartquake Research Institute, University of Tokyo*, 83, (2008), 227–241, Japan.
4. Sunitha, N., Umajyothi, Y., Geddam, P. S., & Sreedevi, P. Assessment Of Vark Learning Style Compatibility In Ict Modules On Health And Nutrition Education.
5. Grieder, P. K. F. 2010 – *Extensive Air Showers*, Book Springer Verlag, Berlin, Heidelberg, Germany.
6. Van et al. Measurements of natural radioactivity at different atmospheric depths. *Revista Geofísica, IPGH*, numero 28, enero-junio 1988, México.
7. Ojewole, F. O. L. U. S. O., & Thompson, C. E. S. A. R. I. N. A. (2014). Assessment of critical thinking dispositions on nursing students in Southwestern Nigeria. *IMPACT: URANSS*, 2(3), 7–16.
8. Martin, I. M. Measurements of natural radioactivity in Poços de Caldas, Brazil, *Revista Ciência e Cultura*, 34(8), 1065, 1982, Brazil.
9. RD200 Radon Eye - <https://www.amazon.com/Radon-Detector-Home-Owner-Plus/dp/B07864XVBH> accessed in January 2019.

10. Silva et al. Ionizing radiation measurements using low-cost instruments for teaching in college or high-school in Brazil published by *Physics Education*, May 2017, see <http://iopscience.iop.org/journal/0031-9120>.
11. Salimin, N., Jani, J., Ishak, N. A., Hassan, S., Elumalai, G., Boon, O. K., & Shahril, M. I. (2014). Validity and Reliability Of Comprehensive Assessment Instruments For Professional Skills In Field And Court Sport Among Major Students Coaching Based On Model K.
12. Yajima et al. 2010. "Measurements of Cosmic-Ray Neutron Energy Spectra from Thermal to 15 MeV with Bonner Ball Neutron Detector in Aircraft." *J. Nucl.Sci, Technol.* 47(1), 31-39.
13. Boardman, B. J.: User's Page. 2015. Aware Electronic Corp. <https://www.aw-el.com/> Accessed in 07 September 2018.
14. Martin et al.; " Dynamics of Radon Gas Near Ground Level in São José dos Campos Region During April-May 2018" *Global J.Eng. Sci.Res.*, Vol. 5 pag. 117-120, DOI: 10.5281/zenodo.1288483, June 13, 2018.
15. Eisenbud, M. and Gessel, T. *Environmental Radioactivity*, San Diego, Califórnia, 1997.
16. Fior, L. Analysis of the Concentration of Radon from construction. Dissertation (Master's Degree in Mechanical Engineering and Materials Engineering) - Federal University of Minas Gerais, Department of Research and Post-graduation, UTFPR, Curitiba, 2008.
17. Sharma, S., & Goyal, P. K. (2014). Cost overrun factors and project cost risk assessment in construction industry-a state of the art review. *International Journal of Civil Engineering (IJCE)* Vol, 3, 139-154.
18. Santos, T. Distribution of the Radon Concentration in Residences and Other Constructions of the Metropolitan region and other Constructions of the Metropolitan Region of Belo Horizonte - RNBH (Master's Degree in Nuclear Sciences and Techniques) Federal University of Minas, Gerais, Department of Nuclear Engineering, UFMG, Minas Gerais, 2010.